

2025

Annual Report



First Presbyterian Church

412 West Pioneer

Puyallup Washington



Church Staff 2025

Transitional Pastor.....Pastor Tom Paine
Young Adult and Youth Ministry Coordinator:Katie Wolfe
Church Administrator Diane Gibbons
Coordinator of Music Ministries*: Bill Klouse
Choir and Praise Team Director: Andrea Klouse
Pianist.....Debbie Jaap
Pray-Ground Attendant.....Heather Toomey
Parish Nurse*: Nola Gene Byrd
Handbell Director*:LaVon Golliet

* denotes volunteer position

Land Acknowledgement

We acknowledge that we are on the traditional homelands of the Puyallup Tribe. The Puyallup people have lived on and stewarded these lands since the beginning of time, and continue to do so today. We recognize that this land acknowledgement is one small step toward true allyship and we commit to uplifting the voices, experiences, and histories of the Indigenous people of this land and beyond.

2025 Church Leadership

Session

Moderator: Transitional Pastor Tom Paine

Clerk: Todd Giltner

Class of 2025

Julie Giltner

Susan Hogge/ CherylHodgson

Errollynn Marsh/ Jane Carden

Phyllis Smith

Gert Williams/ Pat Walton

Class of 2026

Bob Sudderth

Scott Byrd

Joe Harrison

Andrea Klouse

Bill Klouse

Class of 2027

Jane Carden

Pat Walton

Salley Zeiger Hanson

Deacons

Moderator: Robbin Warren / Lynn Arthur

Vice Moderator: Robbin Warren

Secretary: Marj Harrison

Treasurer: Shirley Markum

Class of 2025

Lynn Arthur

Shirley Ashburn

Diane Gibbons

Galen Stark

Heather Toomey

Class of 2026

Jan Blanchard

Marjorie Harrison

Shirley Markum

Laurie Peil

Robbin Warren

Class of 2028

Heather Toomey

Galen Stark

Lynn Arthur

Sue Johnson

Corporation Officers

President Scott Byrd

Vice President..... Jane Carden

Secretary Todd Giltner

Treasurer Joe Harrison

Financial Team..... Joe Harrison, Laurie Peil

In Memory Of . . .

Walter Arthur

Gene Markum

Suzanne Waters

Eileen Bullen

ErroLynne Marsh

Cliff Stickney

Cliff Laycock

In life and in death we belong to God.

Through the grace of our Lord Jesus Christ,
the love of God, and the communion of the Holy Spirit, we
trust in one triune God whom alone we worship and serve . .

With believers in every time and place we rejoice that
nothing in life or in death can separate us from the love of
God in Christ Jesus our Lord.

New Members and Baptisms

Daniel Fincannon

Addie Kilcup

April Kilcup

Mark Kilcup

Scott Hermann

Statistical Report

January 1 ~ December 31, 2025

Total Membership as of 12/31/24	104
Gains	
Reaffirmation of Faith	1
Baptism & Profession of Faith	3
Profession of Faith	
Letter of Transfer	
Total Gains	
Losses	
Certificate of Transfer	1
Deletions	
Death	7
Total Losses	
Total Active Membership as of 12/31/2025	100

Report of Pastor

What an incredible transformational year 2025 was. We accomplished a great deal of ministry while, at the same time, preparing to call your next installed pastor. I have had the honor of working with so many of you in different contexts. First Presbyterian Church, Puyallup remains a central and important congregation in the heart of the city, and I believe is heading in a good and sustainable direction, most importantly, serving the Lord.

In 2025, we had new members, baptisms, an improved sound and projection system, and a new food pantry. We also held strong Lenten, Easter, stewardship, Advent, and Christmas programs. We continued to show our care for God's people well beyond our walls through our bags of grace, by supporting New Hope, in our ECEAP program, with special offerings, and by welcoming people from Lockett House. This all occurred while we conducted a mission study, called a Pastoral Nominating Committee, and finished a Ministry Discernment Profile. I also had the joy of overseeing a wedding, as well as honoring long-term members and friends in memorial services and celebrations of life.

It is an honor being your transitional pastor, and I will keep running strong until your permanent pastor takes the baton.

In Christ,

Tom Paine
Transitional Pastor, FPC Puyallup

Board of Deacons

Moderator: Galen Stark (Jan-Apr) and Robbin Warren (May-Dec)

Vice Moderator: Robbin Warren (Jan-Apr) and Lynn Arthur (May-Dec)

Secretary: Marjorie Harrison

Treasurer: Shirley Markum

Board Members: Jan Blanchard, Sue Johnson, Laurie Peil, Heather Toomey

The Deacon's mission is to provide services of care and compassion to members of the congregation and beyond. The support of our church family allows us to maintain this mission. Thank you for your continued support and encouragement. The following are some of our missions, the Deacon in charge of each mission, and a few of the year's accomplishments:

Communion (Robbin Warren) – Communion elements and home communion were prayerfully prepared and served each month. This is done in remembrance of Jesus Christ's sacrifice for our sins so we may have eternal life.

Cradle Roll and Beyond (Sue Johnson)

Deacons send cards and reminders to the young people in our church that we care and extend God's love to them. When a new child is born or joins the church, Deacons will put together a gift for them.

Food Bank (Marjorie Harrison)

Deacons have a goal of supporting the local Puyallup Food Bank with a monthly donation of \$150 along with monetary donations from the congregation. Our congregation members donate items which are gathered and delivered monthly to the food bank by the Deacons.

Health Ministries (Jan Blanchard and Heather Toomey)

The Deacon Health Committee sorted the medical equipment available in the Medical Equipment Closet. The available equipment has been advertised to members and worshippers for use.

The Deacons implemented daily health check-ins for members who live alone. This is a text or phone call to assess physical and mental well-being of others. Additionally, there are groups who have exchanged information of neighbors and family who have access to other's homes in the event there is no response to text or calls.

Nominating Committee (Lynn Arthur)

The committee placed 1 new Elder and 3 returning Deacons last Spring. We are currently trying to recruit 4 new Deacons and 4 Elders for terms starting in May of 2026.

Board of Deacons

Prayer Chain (Robbin Warren)

The prayer chain continues to grow spiritually and emotionally with requests and praises shared. The power of prayer connects our church with God and strengthens our faith.

Receptions (Jan Blanchard, Laurie Peil, and Galen Stark)

Memorial receptions were held for Susanne Waters in April, ErrolLynne Marsh in June, Gene Markum in June, Cliff Laycock in July, and Walt Arthur in September.

Sunshine (Lynn Arthur and Shirley Markum)

In April, 14 Easter Lily plants were delivered to members of our congregation not able to be present at services and to church staff. During Advent, 20 poinsettias were delivered to those same members and staff as well to many church volunteers.

Visitation (Galen Stark)

Deacons reach out and attempt to visit church members who need friendship and caring. Such as those who are no longer able to attend worship in person, experiencing recent life changes, and those who are at least 90 years of age. As of December, Deacons were visiting 17 members on a regular basis.

Special Events

Blue Advent

Deacons hosted a Blue Advent Service on Dec. 7. The service provides a space for feelings of sadness, loss, grief, loneliness, or hardship during the holiday season. The service offered a gathering for those to feel comforted and supported while being surrounded by others who understand. Handknitted prayer shawls were made available to those who wish to take one home and keep.

Bates ECEAP Preschool Christmas Giving Tree

Congregation members generously responded to the ECEAP Giving Tree, providing gifts and monetary donations from which the Deacons purchased gifts for 16 children from 5 families in the ECEAP program. Each child received clothing, a book, and a toy. All books were donated by a friend of the congregation. An anonymous donor from the congregation provided a pair of shoes for every ECEAP student with the Deacons facilitating the sizing, wrapping, and gifting of 37 pairs of shoes and socks. There were many expressions of gratitude and appreciation from the students and their families. Thank you for showing Christ's love through these gifts.

Thank you for your continued support of the Deacons ministries.

Board of Deacons Financial Report

Deacons 2025 Financial Report		
		Submitted by SM
Beginning Balance on 1/1/25	(Revised) carry over balance from 2024	2020.48
<u>Income</u>		
Donations		3226.26
Memorials	4 families	745.00
Deacon pass thru funds XFBF		3590.00
	Total Income 2025	7561.26
<u>Expenses</u>		
Food Bank	January—September 2025	1350.00
Bridges of Love	January—September 2025	450.00
Receptions	Town Hall Tacos	85.54
Upper Room	July 2025– February 2026	244.67
Easter Lillies/Poinsettias		108.88
Stamps		0
Communion Supplies		25.31
These Days	1 year	44.75
Remembrance celebration		78.29
Mileage		0
Giving Tree		72.47
Gift Cards/Cards		40.00
Christmas Shoes/Socks		84.74
Pass thru food bank XFBF		2805.00
	Total Expenses 2025	(5389.65)
	Carry over from 2024	2020.48
	2025 total income	7561.26
	Ending Balance	4192.09

Gifts and Memorials

Committee members:

Laurie Peil, Karri Wicka, Arthelyn Blank, Scott Byrd,
Jane Carden and Joe Harrison

January 2025 Memorials Balance \$9912.07

Total funds received in 2025 were in memory of :

Myrtle Thomas

Gene Markum

Suzanne Waters

Dr. Walt Athur \$10,580.00

2025 Transfers were made to :

Presbyterian Women

Lawn and Gardens

Music

Deacons

Endowment

Puyallup Food Bank \$19,610.00

January 2026 Memorials Balance \$882.07

Presbyterian Women



Moderator: Gert Williams

Vice Moderator: Laurie Peil

Secretary: Myrna Laycock

Treasurer: Sue Crowe

Coordinating Team: The officers, plus Karen Bennett, Cheryl Hodgson, and Karri Wicka. This planning team meets monthly.

This year's Horizon Bible Study is entitled, "Finding Resilience, Joy, and Our Identity in Jesus Christ." Two Circles of women meet monthly to discuss and explore the nine lessons of this study. One Circle meets on the second Wednesday at noon, and the Eve Circle meets on the fourth Tuesday at 6:30. All women are invited to attend.

Our PW Yearbook is published annually. It contains pertinent information about our Presbyterian Women's group for 2025-2026.

Honorary Life Membership was awarded to Diane Gibbons this year. A donation in her honor was given to the PW USA. Her pin and certificate were presented on Gifts of Women Sunday in March.

Monthly Gatherings. We gather on the first Friday of each month to enjoy fellowship and hear invited guests share about their journeys and missions in life. We bring our own lunches and share a provided dessert. Again, all women are invited to attend.

Our May Luncheon was "Is it Spring Yet?" Our December Tea was "Christmas Joy." The Luncheon was small, but the tea was wonderful with our annual presentation from the Norselanders.

Laurie Peil

Presbyterian Women Financial Report

Beginning Balance as of January 1, 2025	
Income	3916.04
Scholarship Tea (2025)	531.00
PW Circles/Gatherings	1023.00
Least Coin	35.00
Study Guides	
Birthday Offering	142.00
Adjustment	
Total Income	1731.00
Expenses	
Mission Pledge	345.00
Birthday Offering	142.00
Scholarship Transfer	
Speakers/Gifts	139.00
Travel Expenses (USAME conference)	
Literature (Bible Study Guides)	
Coffee Oasis Donation	
Life Membership	
Dispersal	
Total Expenses	626.00
Beginning Balance	3916.04
Income	1731.00
Total Expenses	626.00
Ending Balance as of December 31, 2025	5021.04

Congregational Worship Life

Our members are
elders; Andrea Klause and Bob Sudderth
Laurie Peil, Gert Williams, Shirley Ashburn, Karri Wicka, Jane Elam and Robin Warren. (We have had two year-end resignations from our commission. Invitations have been issued to two new people)

Sunday Worship Services: The music ministry is led by Andrea and Bill Klouse with Debi Jaap on the piano/organ. Choir and Praise Team practices are weekly. Worship services begin at 10:30 a.m.

Pulpit Supply: Honorariums were given to Pastor Nicole McKnight and Preston Woodall, who filled in while Pastor Tom was away.

Audio/Video and Live Stream Teams: Members are Alice and John Dowie, Scott Byrd, Laurie Peil, Todd Giltner and Joe Harrison. They serve faithfully every Sunday.

Ushers and Lay Leaders: Individuals from the congregation are recruited by Commission members. Many thanks to those who serve!

Membership Update: (Can we get the numbers from Diane?)

Alleluia Ringers: Under the direction of Todd Giltner and LaVon Golliet, the Alleluia Ringers rang for church services on several occasions - a group of very dedicated volunteers!

Season of Lent: Palms were purchased for Palm Sunday. Andrea directed the choirs for Palm Sunday and Good Friday Services.

Fellowship Hour: The Commission sets up beverages and snacks for fellowship after Sunday services. Karri Wicka does the ongoing purchase of consumable supplies.

Season of Advent: The church was decorated for advent. Beverages and donuts were provided. Advent Candle lighters were recruited for each Sunday,

FPC Regeneration Project Update: Initiatives include increased physical and visual vibrancy of the church building, Contemporary Banner signage and partner with CE and GW on assisting community youth with after-school activities, homework and fellowship.

Ongoing Projects: Current input for an updated Wedding/Funeral pamphlet has been gathered for Pastor Tom. The CWL teams performs a number of routine services during the course of the year, including keeping candles filled and the baptismal font clean.

Potlucks - 2025: CWL organized two potluck functions in 2025— August 10 and October 26.

Mission Committee

Looking ahead to 2026

Our members: Elder Pat Walton, Phyllis Smith, Sue Johnson, Jan Blanchard, Markie Garrity, Ruben Bocanegra, and Anitra Sudderth.

2025 was a year where we tried some new ideas, *and they worked*.

We continued the ministries that we have done for many years, such as the weekend lunches for the preschool children who meet in our building. We made and served a meal twice monthly at the New Hope Resource Center. We filled and handed out Bags of Grace to people in need that we saw in our community. We participated in the Faith In Action weekend on October. We promoted the Special Offerings, such as One Great Hour of Sharing and the Christmas Joy Offering. Some members of our congregation participated in Hagar's Community Church at the Purdy Women's Correctional Facility. We took lunches and snacks to job sites for the Habitat for Humanity volunteers.

We felt lead to try some new ideas. The Free Food Pantry has had an impact in the community, as we saw people putting in as well as taking out food items. Our Christmas Eve Lunch was well received. While we did not get 100 people, those who came got a good meal, conversation, worship, and a small gift bag.

Thank you to all the folks who worked on the committee this year. Their ideas were great and their collective work extraordinary.

Thank you to the faithful folks who joined us when we package up the weekend lunches for our preschool children, and who helped us when we took a meal to the New Hope Resource Center. And thank you, the congregation. When we asked you to help us fill the bags of grace, you always stepped up, and a lot of people have been helped because of this.

This year we will continue these ministries. We are also thinking about doing a few other ones. If you would like to share some ideas on helping people in the community, or would like to work to bringing this about, please speak to any of us on the committee.

Also, please consider helping out in community organizations such as Habitat for Humanity, the Red Cross, the Food Bank, the New Hope Resource Center, and the many other places that need us to be the hands and feet of Christ. Thank you.

Respectfully submitted,

Patricia Grossie-Walton, Elder

Facilities

The Facilities Commission would like to first thank all the volunteers who took time out of their schedules to work with the Facilities Commission! These members include Todd Giltner, Johnny Carden, Ruben Bocanegra, Debbie Bocanegra, Robert Sudderth, Jan Blanchard, Bill Klouse, Galen and Lynn Stark, Mark Kilcup, Diane Gibbons, and many others.

Projects completed this year include:

Various plumbing repairs

Trimming of the Rhododendrons in the courtyard and the children's play area.

Painting of the Social Hall stage and minor painting repairs around the church.

Building the Food Pantry and repair of it also.

Replacing the lighting in the social hall with LED lighting.

Replacement of toilet paper dispensers.

Discussion and research of crash bars on front doors.

Please keep your eyes peeled for our next work day in the Spring.

Submitted by Scott B.

Christian Education

CE Committee members for 2025 include:

Elders Bill Klouse and Cheryl Hodgson; Scott Hermann, Katie Wolfe, and Jan Blanchard until October when she went on to the Pastor Nominating committee. In November Deb Bocanegra joined our committee, Pastor Tom Paine also attends all meetings.

Our committee oversees the following programs within our church:

- Adult Sunday School class
- Men's Breakfast
- Children's Sermons
- Young Adult Ministries
- Nursery / Prayer-Ground
- Youth Sunday
- Youth Group
- 2025 Youth Mission Trip to Campbell Farms in Yakima, WA.
- Annual Christmas Pageant

In the spring, we added a Children's Sunday School that meets following the Children's Sermon in worship.

We are a committee that is evolving and changing as the needs of the congregation changes.

We welcome anyone who might like to serve on our fun and active committee.

Adult Bible Study Sundays 9am

Adult Sunday School group (AKA Walking In The Light) meets most Sundays. On average, we have 4 to 5 attendees each week including myself. I am generally pleased with the substantive conversations and level of engagement from the group. Our Feasting On The Word curriculum -- we've begun to repeat the lectionary cycle that started when I first started facilitating classes -- continues to be satisfactory, if not optimal for such a small and sometimes irregular group. A more focused book / theme-oriented Bible study plan may be called for. I'd be interested to hear ideas from the larger congregation.

Submitted by Scott H.

Children's Sunday School

During the fall season, Sunday School met regularly and was led using the Revised Common Lectionary as the guiding framework for lessons. Instruction drew from children's Bibles and the Book of Psalms, helping students engage Scripture through age-appropriate storytelling, discussion, and reflection. As the weeks progressed, the children demonstrated a growing ability to make connections between lessons, recalling earlier stories and themes and applying them to new readings.

With four students attending regularly, the small group setting fostered strong relationships among the children. Trust and familiarity grew throughout the season, creating a welcoming environment where students felt comfortable asking questions, sharing insights, and supporting one another. The children consistently came prepared and eager to participate, engaging enthusiastically in hands-on activities such as making ornaments, drawing a garden to explore biblical imagery, and building forts to reinforce themes of shelter, community, and God's presence. The fall session provided a faithful and joyful foundation for spiritual growth, learning, and relationship-building.

All of Christian Education is excited to move into the new year and continue these transformative lessons with our kids.

High School Youth Group

The High School Youth Group met regularly from January through June, focusing on building community, exploring faith questions relevant to daily life, and supporting one another through conversation, study, and shared experiences. A highlight of the winter season was the overnight lock-in held in January, which provided extended time for fellowship, games, shared meals, and faith-centered conversation, strengthening relationships within the group.

This season was especially meaningful as it included three graduating seniors whose leadership, insight, and steady participation helped shape the group's dynamic. As they prepared for graduation and the transition into new chapters of life, youth group offered space for reflection, encouragement, and celebration of their growth in faith and maturity. Their presence and contributions were a significant gift to the ministry.

Following the end of the school year and the graduation of the seniors, High School Youth Group is currently on hiatus. In July, several youth participated in a mission trip in partnership with the Shepherd of the Hill youth group; details of this experience are included in the mission report elsewhere in the annual report.

2025 MISSION TRIP

A Week of Service, Growth, and Community at Campbell Farm

Our week began with that classic adventure feeling: a good old-fashioned road trip. We loaded up as a group, buzzing with excitement, and made a quick stop in Cle Elum to pick up the last of our crew. Spirits were high as we pulled into the Campbell Farm just in time for dinner. But before we ate, we had the chance to tour the grounds and get a feel for where we'd be spending the week. The property was both peaceful and full of life—with a playground, gardens, animals, a walking path, and a dorm-style housing setup that quickly made it clear: we were officially away from home.

After settling in, everyone got a little free time. A couple of the guys used the opportunity to build a second soccer net—because apparently, one just wasn't enough! We soon learned that during free time, the kids had a knack for finding wherever the adults weren't—which gave us a surprisingly good window for games and quiet moments.

Monday: Getting to Work

Monday morning kicked off with a quick finish on the soccer net project and clearing fallen limbs left behind by a recent windstorm. After breakfast, we packed up our lunches and made our way to Northwest Harvest, a food distribution center that supports regional food banks across the area. Our team jumped right in, working alongside others to get food moving toward the people who need it most.

Tuesday: Many Hands, Many Missions

Tuesday brought new energy and the chance to split into different work groups. One team headed to the Toppenish Food Bank, preparing the facility to serve over 100 families. Another joined the summer camp crew at Campbell Farm, crafting colorful flying butterflies with the younger kids. The final group—who proudly dubbed themselves The Ditch Boys—worked to clear out a pond and irrigation channels. Their work will help ensure consistent water access for the farm's gardens and livestock. Each group played a unique part in strengthening the surrounding community. Whether it was feeding families, helping with camp programs, or improving water systems, we could see that every small act was creating a ripple effect.

Wednesday: Rice, Roses, and Royalty

By Wednesday, we were in the swing of things. We started the morning in the rose garden, weeding diligently—even if enthusiasm was low at first. Then we split again: a group returned to Northwest Harvest to continue our rice-bagging mission, while others stayed back to support summer camp activities. At camp, the kids designed paper crowns and used their imaginations to create skits based around them—giving us a chance to see how creativity can bring confidence and joy.

Meanwhile, our crew at Northwest Harvest finished strong, bagging approximately 6,000 pounds of rice over two days. That's 6,000 meals that will reach homes across the region—a tangible reminder of how powerful collective effort can be.

After all that hard work, we headed out for some fun at the Yakima Valley History Museum. For nearly two hours, the kids explored in buddy pairs, soaking up local history and hands-on exhibits. That night, during our evening devotional, nearly everyone shared that the museum was their favorite part of the day—a testament to how much learning can happen when it's wrapped in discovery.

Thursday: Stories, Service, and Water Slides

Thursday began with something a bit different: a reflective conversation with Dionna, the executive director of Campbell Farm. She spoke powerfully about the farm's history, the strength of her community, and the role of the Birth Justice Center within the Yakima Nation. Her words grounded us in the deeper purpose behind our work.

That day, our teams set out once more with purpose and energy. One group returned to the Toppenish Food Bank to continue their support, while another helped a local community member by removing a fence from her property so it could be repurposed for use at the farm. A third group remained on-site with the summer campers, who spent the day exploring science and creativity by making kaleidoscopes and learning about different types of bird wings.

That evening brought a truly special experience. We were honored to have Sonya and her family join us for dinner. Sonya prepared a traditional meal of salmon and frybread, which she graciously shared with us. After the meal, she opened her heart and shared her life story—from her peaceful, community-rooted childhood, through personal battles with addiction, to her current role as a tribal archivist, preserving and giving back to her community. She spoke powerfully about the core values of the Yakama Nation and embraced the tradition of storytelling, closing with a moving water-centered prayer that reflected the spiritual significance of the natural world.

MISSION TRIP

We ended our final night in joyful celebration—with a giant inflatable water slide provided by the farm. While proper swimwear was in short supply, no one lacked excitement. The racing-style slide sparked friendly competition and endless laughter. It was a vibrant, playful way to end our time together—full of spirit, connection, and unforgettable memories.

Friday: Giving Back, One Last Time

Our final day was, in a word, long. But it was also deeply meaningful. In preparation for a funeral of a beloved community member, many Campbell Farm staff would be occupied or emotionally stretched. To show our gratitude, we took it upon ourselves to clean the entire building from top to bottom. It was our way of giving back to a place that had been so generous with us—providing shelter, opportunity, and a connection to a broader mission.

On the way home, we made a well-earned stop at Miner's Drive-In for some seriously good food. The drive back was a true Washington experience: delicious burgers, full hearts, and a solid six hours of traffic. Despite the long haul, there was a peaceful contentment among us—we had served well, laughed hard, and grown closer.

Beyond the Service: Daily Life and Deeper Impact

Every day outside our projects, we followed Campbell Farm's rhythm: morning and evening chores, a 3-person meal serving crew, and a 5-person clean-up team after each meal. These daily responsibilities weren't glamorous, but they gave structure to our days and reinforced the idea that even the smallest acts of service matter. Everyone pulled their weight, and over time, those simple routines built a sense of ownership and community among us.

During downtime, the kids made the most of the beautiful setting. With reduced light pollution, many took time to stargaze, soaking in skies that felt endless. Others spent time with the farm bunnies, played Twister in the common room, or dove into the imaginative world of Cyberpunk. These moments—laughing over a game, sitting quietly under the stars, or caring for animals—reminded us that service doesn't just happen in food banks or ditches. It happens in how we live alongside each other, how we care for our environment, and how we make space for joy, rest, and connection.

While on our trip, both Carly and Mattie had the opportunity to do a ride-along with Campbell Farm's feeding program—an experience that left a deep and lasting impact on them, and ultimately on the entire group. The feeding program is not just an act of generosity—it is, quite literally, a lifeline for many families in the Yakima Nation. Operating Monday through Thursday, the program ensures that every child and elder in a household receives at least one meal a day. For many of these individuals, it's the only food they will see that day.

The stories Carly and Mattie brought back weren't just eye-opening—they were heartbreaking and urgent. They shared images of children—some naked or barely clothed—playing in the streets without supervision. In too many homes, there were no adults present, and no food in the house, just children caring for younger siblings and waiting for the one meal they knew would come from the farm's van. It was a sobering reminder of the vulnerability these children live with every single day.

This kind of generational vulnerability has only deepened in the wake of COVID-19, which devastated many Native communities. On the Yakima Reservation, where extended families often live together in multi-generational homes, the pandemic not only caused widespread illness but tore apart the family support systems that once helped care for children. Grandparents—who often functioned as the primary caregivers—were lost at alarming rates, leaving children without the guidance, protection, or structure they so desperately need. In many cases, it's now older siblings, sometimes just barely school-aged themselves, who are trying to fill the void.

Hearing these stories gave our team a renewed sense of urgency and purpose. It reframed our service—from bagging rice or pulling weeds—to something much bigger: standing in solidarity with a community in crisis. It affirmed that our presence wasn't just helpful; it was essential. We weren't just volunteering—we were answering a call to compassion, to justice, and to human dignity.

Scholarship Committee

Jane Elam (co-chair), Shirley Ashburn, Ken Cockle, Cheryl Hodgson, Betty Zeiger and Mary Zeiger

The following scholarships were awarded in 2025:

The 2025 Leslie J. Paulson Memorial scholarship awarded \$2,000

Lacey Boots is currently attending the University of Montana Western where she is majoring in Education and Studio Arts.

The following students were awarded First Presbyterian Church Scholarships in the amount of \$2,000 each.

Alex Byrd is attending Montana Tech with a double major in mechanical engineering and aerospace engineering.

Stephan Hermann attending Whitman College, major not yet declared.

Alicia Warren is attending Arizona State University and will graduate in the summer of 2025. She will receive a Bachelor of Science in Business specializing in Supply Chain Management.

Jane Elam made a motion that we give up to \$2,000 for camp scholarships. Cheryl seconded the motion. Motion voted on and passed.

To date 292 scholarships totaling \$229,000 have been awarded.

First Presbyterian Church values education and supports our high school and college students.

This has been made possible because of generous church members, the Presbyterian Women and friends over the years.

We thank you for your support and prayers.

Endowment Committee

Submitted 1/12/2025 by: Karri Wicka, Chair

FUNDS (Account #1046193)	Beginning Balance 1/1/2025	Ending Balance 12/31/2025	Dividends Earned	Comments
New Covenant Balanced Growth Fund / 1103	\$356,442.11	\$321,718.89	\$5614.18	\$7112.00 to Scholarships \$60,000.00 to General fund Exp.
New Covenant Income Fund / 1104	\$2732.33	\$2832.60	\$157.82	
New Covenant Growth Fund / 1105	\$612,962.34	\$707,207.85	\$3167.35	
Federated Hermes Treasury Obligations / 1107	\$82,650.06	\$65,123.02	\$9058.20	\$30,000.00 to General Fund Expenses
TOTAL	\$1,054,786.84	1,096,882.36	\$17,997.55	

Dividends from our investments are distributed to Commissions as follows: 30% for Community & Global; 30% for Scholarship; and 30% for Facilities. The remaining 10% is reinvested.

Commission	2025 available funds	2025 Funds Used	2026 Allocation	2026 Available Funds
Community & Global	\$23,603.20	\$0	\$5999.18	\$29,602.38
Scholarship	\$18,461.51	\$7112.00	\$5999.18	\$17,348.69
Facilities	\$10,583.04	\$0	\$5999.18	\$16,582.22

Personnel/Stewardship/Finance

Personnel Stewardship Finance Annual Report - 2025

Ruling Elders: Joe Harrison and Jane Carden

Members: Sally Zeiger Hanson, Shirley Markum

Treasurer (interim): Joe Harrison

Financial Secretary: Joe Harrison and Laurie Peil

Bookkeeper: Cherie Owens of Good Faith Bookkeeping

Tellers: Karris Wicka, Laurie Peil, Jane Carden, Deb Bocanegra, and Shirley Markum.

Personnel, Stewardship and Finance Committee has responsibilities in each of these three areas as well as oversight of the Scholarship Committee, Memorials Committee, and the Endowment Committee.

PSF develops job descriptions and pay ranges for paid staff in conjunction with the appropriate Committee. Our employees are talented, loyal and contribute much to our church community.

Paid FPC staff

Pastors: Tom Paine

Sr High and Young Adult Program Coordinator (Jan – Aug), Christian Education Director (Sept – Dec): Katie Wolfe

Church Administrator: Diane Gibbons

Choir director and praise team leader: Andrea Klouse

Custodian: MJG Cleaning LLC

Landscaping and Grounds - Summit Landscaping LLC

Bookkeeper: Cherie Owens prepares the church Accounts Receivable, Accounts Payable and payroll which include payroll tax reporting and year-end preparation.

Organist-pianist: Debi Jaap

Prayer-ground attendant: Heather Toomey

Volunteer Director of Music Ministries: Bill Klouse

The 2026 pledge campaign resulted in 38 pledges for \$ 193,100.

Personnel/Stewardship/Finance

How the money you contribute to First Presbyterian Church of Puyallup Makes a Difference

This overview is designed to give you an understanding of how you can donate to First Presbyterian Church of Puyallup, and how funds are used to enhance the mission and outreach of our church. We have over 50 budget lines that are used to track different funds. When making your contributions it is best to note on your check or the giving envelope the purpose of your contribution.

Your annual pledge goes into the “General Fund” which covers the cost of all staff, building utilities, some building maintenance, session committee expenses, and mission-outreach funds - all of which are the foundation that makes the work of our church possible. Within the general budget the highest percentage goes toward staff and secondly toward facilities.

Another common area of giving is special offerings. Examples are One Great Hour of Sharing, Pentecost, Christmas Joy, Peace and Global Witness, and Christmas Eve offerings. We are proud to be a “4 for 4” church for PC(USA), participating in all 4 of the denomination’s annual offerings for over 10 years.

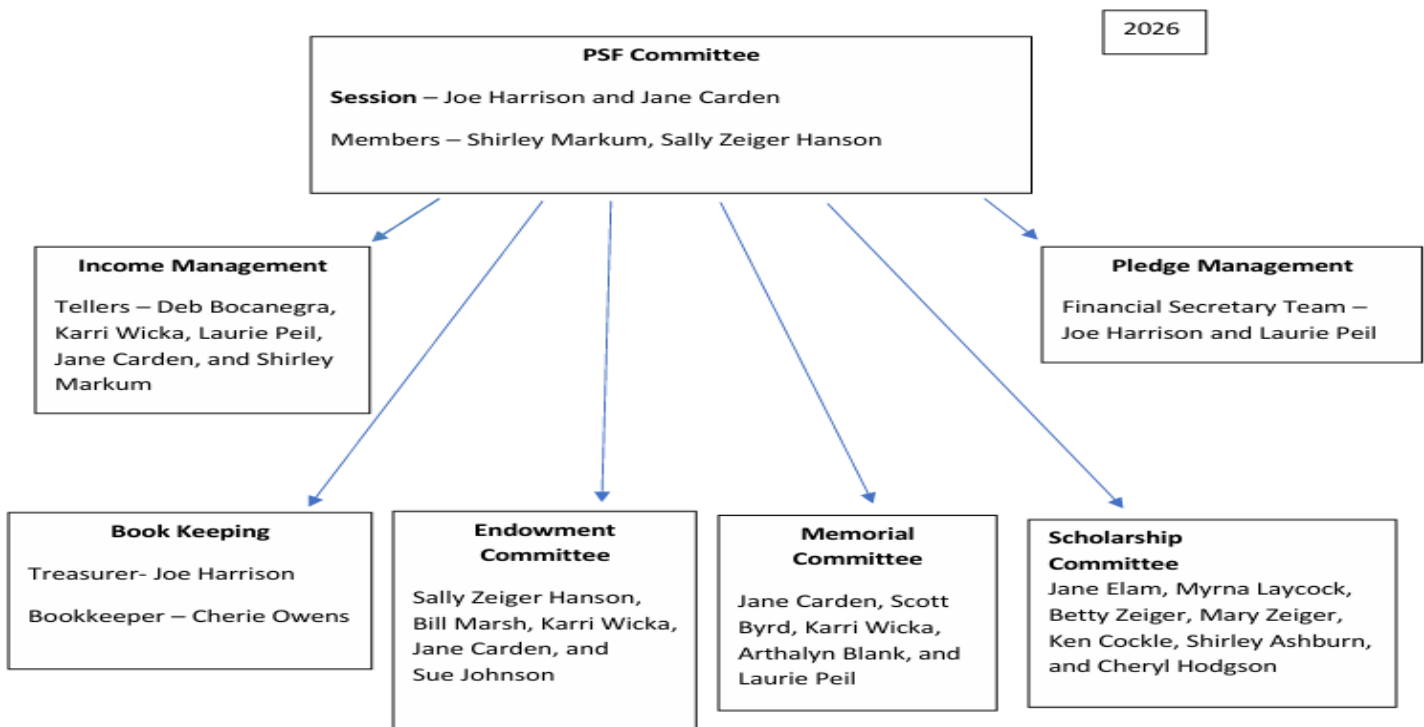
In addition, the loose offering the first Sunday of each month goes to our Deacons for their ministry in outreach to members of our congregation and other organizations such as ECEAP, Puyallup Food Bank, and Bridges of Love NW. You can also support the Deacons by writing a check with Deacons in the memo line.

Another part of our overall financial assets are the endowment and scholarship funds. This account currently has ~ \$1,000,000. Each year the interest generated from the endowment account is distributed 30% to mission-outreach, 30% to scholarships, 30% to facilities, and 10% is reinvested. Funds are commonly deposited into this account at the request of those honoring members who have passed away.

Finally, we ask that members consider paying their per capita assessment each year. This is an amount (\$50.00 in 2026) which we send to Presbytery to support the national and regional bodies of the Presbyterian Church (USA). Our church pays per capita on all active members who have officially joined the church. Your contributions help cover that payment.

We hope this helps increase your understanding of how money is managed and used to make an impact at First Presbyterian Church of Puyallup.

Organization Chart for Personnel-Stewardship and Finance Committee and Sub-Committees



Financial Team Report

Financial Team Report

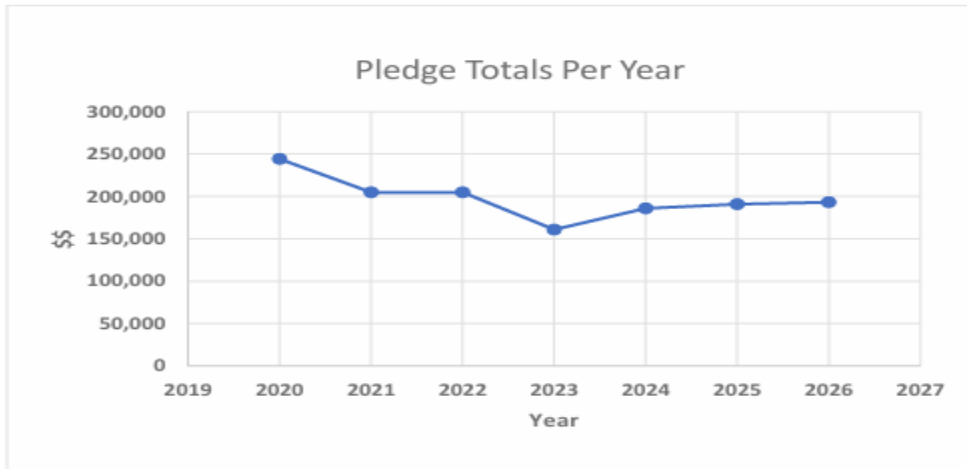
Our goal is to provide an efficient and accurate financial information which allows our Committees, Deacons, Presbyterian Women, and staff to use our monetary gifts to glorify God.

A Session approved budget is used to guide us through the year. Many people work to ensure it is accurate, reasonable, and faith centered. The budget is published and available to all members. Copies of the "line item" budget and monthly ledgers are in the church office if you are interested in the details.

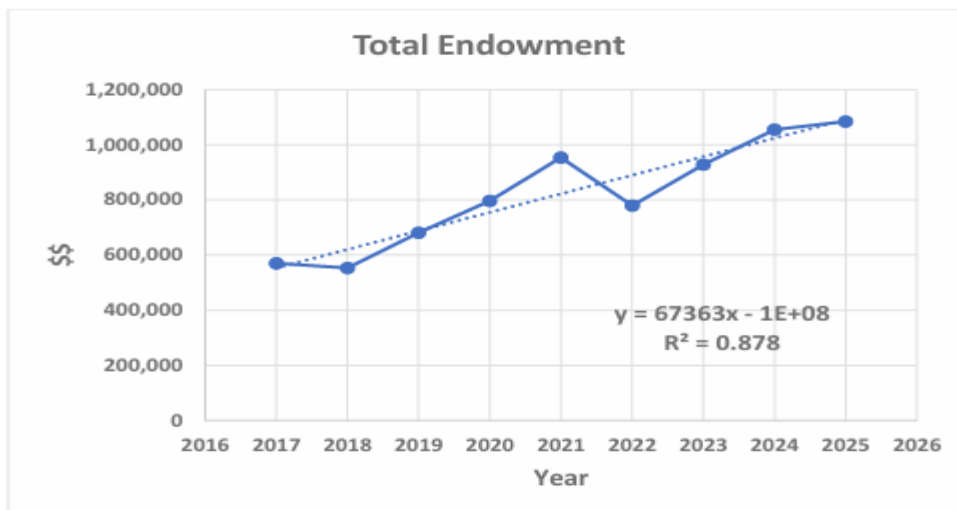
Most of our income is from pledges made by members and friends of the church. We give thankful praise for your faithful and consistent giving. In 2025 we approved a deficit budget for the second time with the intent to use the Endowment funds to create a balanced budget. In 2025, we used \$90,000 from the endowment account.

	Balance	Balance	Balance
Cash Accounts	12/31/2023	12/31/2024	12/31/2025
Bank of America Checking Account	116,503.73	89,321.00	125,136.11

Trend of Pledge Income since 2020



Trend in Growth of Undesignated Endowment Funds since 2017



Regeneration Project Summary

August 31, 2025

Committee – Jane Carden, Julie Giltner, Tom Paine, Deb and Ruben Bocanegra, Andrea and Bill Klouse, and Joe Harrison

Regeneration Purpose – Reinvention of Ministry

The primary responsibility of the Phase II Regeneration committee is to advance the selected strategic option, **Reinvention of Ministry**, to the stage of implementation.

The Greek word for “ministry” is “Diakonia.” The word “diakonia” means “service.” Ministries are activities that serve—they glorify God, spread His word and serve others.

There is a difference between a program and a ministry. A program is any kind of an activity. A ministry is an activity that relates to one of the two great commandments—it shows love for God, or service for neighbor.

Thought for the day - “Who are we serving ?”
Pastor Tom Paine 8 24 2025

Deacons

Tier 1 Summary

Ministry Idea	Committee(s)	Status	Notes
Work with community organizations to seek out more community outreach - helping seniors	Mission/Deacons	??	Discussion between Mission and Deacons
Outreach to our seniors. What is needed to help our seniors.	Deacons	??	Discussion between Mission and Deacons

Based on the above ministry ideas the Deacons, have implemented daily health check-ins for members who live alone. This is a text or phone call to assess physical and mental well-being of others. Additionally, there are groups who have exchanged information of neighbors and family who have access to other's homes in the event there is no response to text or calls.

Furthermore, there has been coordination with the CGD committee on collecting information from the Puyallup Senior Center and their needs we may can assist with.

Tier 2 Summary

Ministry Idea	Committee(s)	Interest in implementing (yes, no, maybe)
Join with other churches in the area to make a tiny home village, or to buy a motel to turn into apartments	Mission	Deacons – maybe
Outreach to 12 step programs who meet in our church	CWL/Mission	Deacons – maybe
Need - via New Hope - Rotating through Pioneer Neighbors Churches - noon meals on Sunday for unhoused especially on weekends	Mission	Deacons – maybe
Be a safe place for homeless and LGBTQIA+	CWL/CE/Mission	Deacons – maybe
Provide programs for school age after school care - meeker, maplewood homework help	CE	Deacons – maybe

Fundraise so we can purchase lockers - ex Puyallup Enhance	Mission	Deacons – maybe
Outreach to city - police/fire - what could we do to support them with love	Mission	Deacons – maybe

Mission Committee

Tier 1 Summary

Ministry Idea	Committee(s)	Status	Notes
Work with community organizations to seek out more community outreach - helping seniors	Mission/Deacons	??	Discussion between Mission and Deacons
An afterschool place for students to gather for fellowship, tutoring, a safe place	CE		
A ministry that involves young adults in how we worship - energy and ideas - music, outings, outreach	CE/CWL	Partially Implemented	Quarterly potluck meals
Advocate more on homelessness, hunger, medical care issues.	Mission	Implemented	Food pantry
Outreach to our seniors. What is needed to help our seniors.	Deacons		
Many educators in our family - tutoring for meeker	CE		
Help young people that have aged out of foster care	Mission	Implemented	Eileen and Callie's Place

Tier 2 Summary

<i>Ministry Idea</i>	<i>Committee(s)</i>	<i>Interest in implementing (yes, no, maybe)</i>
Join with other churches in the area to make a tiny home village, or to buy a motel to turn into apartments	Mission	Would we like to do this? Yes. Can we do it at this time? No. We would need to build a community that could support this idea with commitment, time and resources.
Outreach to 12 step programs who meet in our church	Mission/CWL	We could meet with CWL to see how we could carry this out.
Need - via New Hope – Rotating through Pioneer Neighbors Churches - noon meals on Sunday for unhoused especially on weekends	Mission	We could meet with downtown FIA churches to see if this is possible. We are already serving two meals per month at New Hope Resource Center. Another area church is serving a meal one time a month.
Be a safe place for homeless and LGBTQIA+ **Add undocumented people.	Mission/ CWL/CE/	Meet with CWL & CE to discuss this. Secure doors during worship, meetings. Have members volunteer to be a door opener/welcomer for folks who come late.
Fundraise so we can purchase lockers - ex Puyallup Enhance	Mission	Again, would we like to do it? Yes. Can we at this time? No. We would need to figure out if the lockers would be located in our church building, or would these enhance what NHRC is doing now.
Outreach to city - police/fire – what could we do to support them with love.	Mission	We could ask how we can support them... as a Matthew 25 congregation, and as neighbors.

Congregational Worship Life Committee

Tier 1 Summary

<u>Ministry Idea</u>	<u>Committee(s)</u>	<u>Status</u>	<u>Notes</u>
<u>Work with community organizations to seek out more community outreach - helping seniors</u>	<u>Mission/Deacons</u>		
<u>An afterschool place for students to gather for fellowship, tutoring, a safe place</u>	<u>CE</u>		
<u>A ministry that involves young adults in how we worship - energy and ideas - music, outings, outreach</u>	<u>CE/CWL</u>	<u>Partially Implemented</u>	<u>Quarterly potluck meals</u>
<u>Advocate more on homelessness, hunger, medical care issues.</u>	<u>Mission</u>		
<u>Outreach to our seniors. What is needed to help our seniors.</u>	<u>Deacons</u>		
<u>Many educators in our family - tutoring for meeker</u>	<u>CE</u>		
<u>Help young people that have aged out of foster care</u>	<u>Mission</u>		

Tier 2 Summary

Ministry Idea	Committee(s)	Interest in implementing (yes, no, maybe)
Join with other churches in the area to make a tiny home village, or to buy a motel to turn into apartments	Mission	CWL -No
Outreach to 12 step programs who meet in our church	CWL/Mission	CWL-No
Need - via New Hope - Rotating through Pioneer Neighbors Churches - noon meals on Sunday for unhoused especially on weekends	Mission	CWL- Quarterly post service potlucks. We ran the first potluck in mid September. We will be considering strategies to improve how we get the word out for increased attendance and plans for the next one.
Be a safe place for homeless and LGBTQIA+	CWL/CE/Mission	CWL-No
Provide programs for school age after school care - meeker, maplewood homework help	CE	CWL No.
Fundraise so we can purchase lockers - ex Puyallup Enhance	Mission	CWL -No
Outreach to city - police/fire - what could we do to support them with love	Mission	.CWL -No

Christian Education Committee

Tier 1 Summary

Ministry Idea	Committee(s)	Status	Notes
Work with community organizations to seek out more community outreach - helping seniors	Mission/Deacons		
An afterschool place for students to gather for fellowship, tutoring, a safe place	CE	Not implemented	
A ministry that involves young adults in how we worship - energy and ideas - music, outings, outreach	CE/CWL	Partially Implemented	Quarterly potluck meals
Advocate more on homelessness, hunger, medical care issues.	Mission		
Outreach to our seniors. What is needed to help our seniors.	Deacons		
Many educators in our family - tutoring for meeker	CE	Not implemented	
Help young people that have aged out of foster care	Mission		

* The CE committee focused on the after school program we found it unmanageable. We brainstormed other ideas in a committee meeting. What floated to the top was hosting a monthly men's breakfast with a speaker. Tier 2 Summary -No information submitted

2026 Church Budget

Budget Annual

First Presbyterian Church
412 West Pioneer
Puyallup WA 98371-5368
www.fpcpuyallup.org

Results from Budget

2026 Income Budget

Income

Offerings/Donations

3999	Estimates Non Pledging Givers	0.00
4001	Pledges	193,100.00
4002	Loose Offerings	0.00
4004	Per Capita Donations	1,700.00
4006	Yearly Overage	31,989.26

Total Offerings/Donations 226,789.26

Designated

4009	Other Income	0.00
------	--------------	------

Total Designated 0.00

Rental Income

4022	Bates Early Learning Program	28,200.00
4024	Other Rentals	1,000.00
4027	Living Free	5,000.00
4038	PVMC	2,000.00

Total Rental Income 36,200.00

Total Income 262,989.26

Total Budget For Income 262,989.26

2026 Church Budget

Administration

General Office

6001	Stamps	600.00
6010	Office Equipment Repairs	500.00
6011	Copier Contract	3,000.00
6013	Computer Software/upgrades	1,200.00
6015	On line Communications	2,600.00
6018	Staff Training	120.00
6020	Payroll Administration	1,300.00
6022	Bank Service Charges	250.00
6023	Financial Services	7,000.00
6031	Office Supplies	1,000.00
6032	Telephone/Internet	5,000.00
6033	Paper Supplies	500.00
6038	Mileage Allowance Office Manager	200.00
6041	Church Officer Expenses	100.00

Total General Office 23,370.00

Total Administration 23,370.00

Building/Facility

General Building Maintenance

6301	Supplies	1,500.00
6302	Minor Repairs (<\$500)	2,000.00
6303	Paper Towels, Hand Soap, Dishw...	1,000.00
6304	Landscaping & Grounds	5,500.00
6308	Building Maintenance	2,000.00
6315	Equipment Purchase & Repair	2,000.00
6316	Kitchen Appliance Repair	1,100.00
6365	Insurance & Taxes (Property)	13,000.00

Total General Building Maintenance 28,100.00

Utilities

6351	Electricity	8,500.00
6352	Natural Gas	10,500.00
6353	Water, Sewer & Garbage	10,000.00
6354	Alarm Monitoring	5,000.00
6355	Required Permits & Inspections	1,800.00

Total Utilities 35,800.00

Major Repairs

6202	Major Repairs	10,000.00
------	---------------	-----------

Total Major Repairs 10,000.00

Total Building/Facility 73,900.00

Christian Education

Youth Ministry

8527	Youth Group	900.00
8528	Youth Retreats	1,200.00
8538	Youth Ministry Curriculum	0.00

2026 Church Budget

Christian Education (cont.)

Youth Ministry

8539	Youth Ministry Supplies/Marketing	0.00
8558	Graduating Sr Breakfast/Gifts	300.00
8564	Confirmation Class	200.00

Total Youth Ministry 2,600.00

Children's Ministry

8540	Children's Min. Curriculum	100.00
8541	Children's Min. Supplies	300.00
8555	Nursery/Snacks/Activity Time	0.00
8559	Vacation Bible School	0.00
8560	Children's Music Program	0.00
8561	2nd Grade Bibles	0.00

Total Children's Ministry 400.00

Adult Ministry

8542	Adult Ministry Curriculum	300.00
------	---------------------------	--------

Total Adult Ministry 300.00

Young Adults

8601	Young Adult Retreats	0.00
8602	Young Adult Meals	0.00
8603	Young Adult Supplies/Marketing	0.00
8604	Young Adult Care	0.00
8605	Young Adult Contingency	500.00

Total Young Adults 500.00

CORE Ministry

8544	CORE Curriculum	0.00
8545	CORE Supplies	0.00
8565	CORE Meals	0.00

Total CORE Ministry 0.00

CE Contingency Fund

8551	CE Supply Fund	500.00
8553	Teachers' Gifts, etc.	100.00

Total CE Contingency Fund 600.00

Total Christian Education 4,400.00

Congregational Worship Life

Worship

8001	Pulpit Supply	1,800.00
8002	General Worship Expenses	3,600.00
8004	Candles	300.00
8059	Members Care	50.00
8061	Special Services & Events	150.00
8070	Visitors	54.00

Total Worship 5,954.00

Activities/Events

2026 Church Budget

Congregational Worship Life (cont.)

Activities/Events

7618	Consumable Supplies	1,000.00
7620	Adult Small Group Activities	100.00
7621	Annual Picnic	225.00
7626	Congregational Life Contingency ...	90.00

Total Activities/Events 1,415.00

Music

8009	Special Music	0.00
8081	Choir	100.00
8082	Instrument Repairs & Maintenance	1,000.00
8083	Hand Bells	153.00
8084	Copyright License	800.00
8090	Praise Team Music	0.00
8092	Piano/Organ Substitutes	500.00

Total Music 2,553.00

Public Witness

8045	Public Relations	200.00
8046	Worship & Witness Reserve	405.00

Total Public Witness 605.00

Total Congregational Worship Life 10,527.00

Community & Global Discipleship

Global Discipleship

7501	Per Capita Expense	5,750.00
7502	General Assembly	240.00
7503	Olympia Presbytery	400.00

Total Global Discipleship 6,390.00

Community Discipleship

7528	Church of Indian Fellowship	1,200.00
7545	Freezing Nights	0.00
7547	Bates ECEAP Weekend Sacks	0.00
7550	New Hope Center Ministry	0.00
7552	Hagar's Comm Church (Oly Pres)	1,000.00
7559	Triennium (Oly Pres)	0.00

Total Community Discipleship 2,200.00

Discipleship Enrichment

7701	Consultants/Presenters	0.00
7702	Food/Social Events	500.00
7703	Supplies	200.00
7704	Discipleship Contingency	0.00

Total Discipleship Enrichment 700.00

Total Community & Global Discipleship 9,290.00

2026 Church Budget

Personnel/Stewardship/Finance

Commission

7301	Staff Reserve	200.00
7302	PSF Commission Expenses	0.00
7303	Staff Education & Training	120.00
7304	Congregational Self Study	0.00
7305	Associate Pastor Nominating C...	20,000.00

Total Commission 20,320.00

Total Personnel/Stewardship/Finance 20,320.00

Pastoral Staff

Sr Pastor

7001	Pastor's Salary	25,699.00
7002	Pastor's Housing Allowance	45,222.00
7003	Pastor's SE Tax Allowance	5,425.00
7004	Pastor's Pension & Medical	6,999.00
7005	Pastor's Professional Expenses	1,400.00
7007	Auto/Travel Expenses	1,200.00
7009	Study Expenses	800.00

Total Sr Pastor 86,745.00

Pastoral Services

7016	Pastor's Retirement 403b	1,271.00
7024	Pastoral Care	4,200.00
7025	Parish Auto/Travel	500.00

Total Pastoral Services 5,971.00

Total Pastoral Staff 92,716.00

Support Staff

Youth Ministry

7033	Youth Director	11,000.00
------	----------------	-----------

Total Youth Ministry 11,000.00

Office Manager

7035	Office Manager	36,400.00
------	----------------	-----------

Total Office Manager 36,400.00

Custodian

7045	Custodian	20,000.00
------	-----------	-----------

Total Custodian 20,000.00

Organist

7051	Organist	19,535.00
------	----------	-----------

Total Organist 19,535.00

Child Care

7055	Nursery Director	1,300.00
7056	2nd Nursery Attendant	300.00

2026 Church Budget

Support Staff (cont.)

Child Care

7061	Weekday/Night Nursery Attendant	0.00
------	---------------------------------	------

Total Child Care		1,600.00
-------------------------	--	----------

Music Staff

7050	Music Leader	21,693.12
------	--------------	-----------

7063	Substitute Musicians	0.00
------	----------------------	------

Total Music Staff		21,693.12
--------------------------	--	-----------

Total Support Staff		110,228.12
----------------------------	--	------------

Taxes

Commission

7201	Labor & Industries Tax--Employer	900.00
------	----------------------------------	--------

7202	Social Security Taxes--Employer	3,500.00
------	---------------------------------	----------

7203	Medicare Taxes--Employer	1,000.00
------	--------------------------	----------

Total Commission		5,400.00
-------------------------	--	----------

Total Taxes		5,400.00
--------------------	--	----------

Total Budget For Expenses	350,151.12
----------------------------------	-------------------

2025 Fund Report

	Fund Name	Balance on 31 December 2024	Income	Distributions	Balance on 31 December 2025
XAHM	Armory Hot Meal	1409.22			1409.22
XBEL	Alleluia Ringers' Account	1013.95	2108.33		3122.28
XBLD	Building Projects Account	6344.41			6344.41
	Budget Overage 2025				31,989.26
XCAS	Cash on Hand	3481.74			3481.74
XCLE	Congregational Life Events	861.39		181.96	679.43
XFBF	Food Bank	2050	2235	3590	695
XFZN	Freezing Nights	4412.66	174.25		4586.91
XHEA	Health Ministries	29.62			29.62
XI/O	In & Out Cash	984.53			984.53
XINS	Prepaid Insurance	2680			2680
XKCS	Kids Camp Donations	-58.01	2065	300	1706.99
XKID	Food for Kids	3752.86	5420	4947.03	4225.83
XKLS	Meeker School	1793.3			1793.3
XL/G	Lawn & Grounds	655.54	200		855.54
XMCH	Music Department - Choir	3525	2108.34		5633.34
XMEM	Memorial Fund	9912.07	10580	19610	882.07
XMPT	Music Department - Praise	800	2108.33		2908.33
XMSP	Mission Special Projects	15102.43	5130	1884	18348.43
XMTC	Mission Two Cents Fund	344.42			344.42
XNHC	New Hope Resource Center	-289.45	289.45	597.48	-597.48
XNSC	Neighborhood Spirit	690.04			690.04
XNUR	Nursery Gifts	10.27			10.27
XOCJ	Christmas Joy Offering	1828.56	500	1928.56	400
XOMS	Miscellaneous Offerings	98	25	25	98
XOOG	One Great Hour of Sharing	895.48	953.72	1849.2	0
XOPG	Peace & Global Witness Offering	0	460		460
XOPT	Pentecost Offering	564.2	615	1179.2	0
XPAY	Pastor Associate Young Adult	1170	1475	2595	50
XPAZ	Young Adult Programs	225			225
XPCF	Pastoral Care Fund	344.11			344.11
XRES	Building & Facilities Reserve	2476.92			2476.92
XSCH	Church Scholarship Donations	-8014.65	14144.7	6000	130
XSLP	Church Scholarship L. Paulson	0	2000	2000	0
XSOU	Sound System	4092.88		655.68	3437.2
XTRI	Triennium Scholarship	2500			2500
XVBS	VBS Fund	515			515
XW/R	Weddings/Receptions	125			125
XYGS	Youth Group Scholarships	422.54			422.54
XYMO	Youth Mission Trips & Outreach	1258.57	5336.27	4509.83	2085.01
XYMS	Youth Middle School	40			40
XYRC	Youth Retreats/Conferences	294.41			294.41